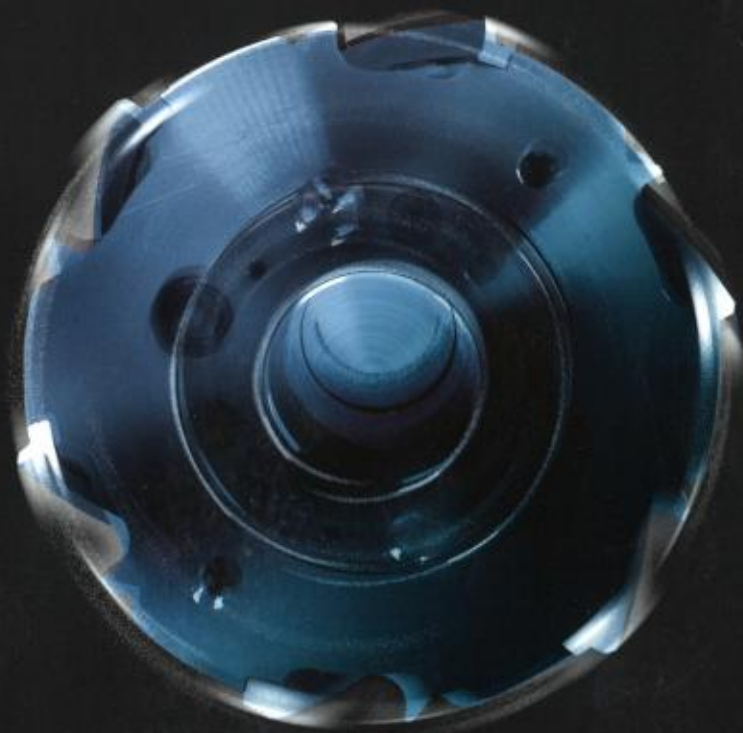


PLANING & PROFILING

OERTLI 

Excellence in solid wood





THE TOP SPECIALIST IN THE PLANING INDUSTRY

The planing industry is unlike most industries. This market demands a clear division. While some customers require an affordable standard tool, others require bespoke solutions.

OERTLI establishes clarity with the OERTLI concept. Our products and services are divided into three ranges: the **Standard**, **Variant** and **Excellent**.



STANDARD

Of the three OERTLI product ranges, the Standard is the perfect choice for economical machining. These competitively priced tools are simple in design, easy to use and can be produced with various knife qualities to machine different materials.

The Standard product line offers a wide choice for the contractor, cabinet maker or planing shop when it comes to standardized profiles.

Here, too, OERTLI provides uncompromised quality, and our sharpening service contributes to optimal usability. For the entire service life of the tool.

UNIVERSAL STANDARD CUTTER

THE PERFECT
CHOICE FOR
ECONOMICAL PLANING

VARIANT

FOR THE
MOST VERSATILE
SOLUTIONS

The product range of choice for more involved planing & profiling work. Due to its flexibility and high precision, this system offers the planing world the most versatile tool solutions.

Custom designed with the optimal cutting geometry for your specific application and optionally affixed to a hydro-grip sleeve. Our product specialists transform your requirement into the right tool. It goes without saying that the result is optimized to allow you to make the most of your machine and production system.

We have our own development department and a modern production facility, allowing us to work closely with our clients.

**SPLITTING CUTTER
FOR ABSOLUTE
PLANING QUALITY**



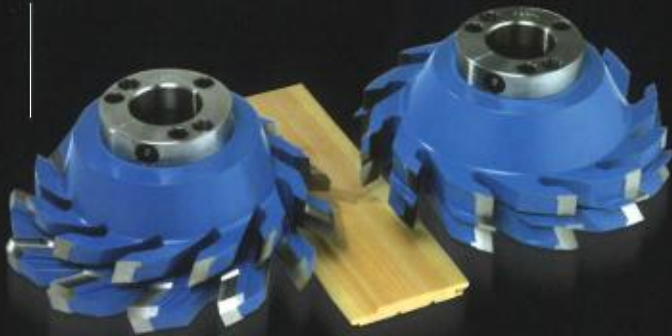
**PRECISION
PROFILE CUTTERS**

HYDRO-GRIP SLEEVE



HIGH-PRECISION TOOL SET

Features the 'EXCELLENT' hydro.
Feed speed to 200 m/min.



FLEXIBLE HIGH PRECISION TOOL SET

Adjustable two-surface bevelling, equipped
with the hydro-system.
Feed speed to 120 m/min.



HIGH QUALITY = HIGH PERFORMANCE

Resulting from stability and
maximum accuracy.

EXCELLENT

TOP PERFORMANCE
DEMANDS TOP
TECHNOLOGY

Our Excellent product range integrates the newest technologies, complementing the most modern machines with precision spindles. These feature the hydro-grip system, ensuring rotational tolerances < 0.005 mm for superior profiling with maximum feed speed and tool life. The Excellent system is distinguished by optimal tool life and lasting precision.

HYDRO-GRIP SLEEVE

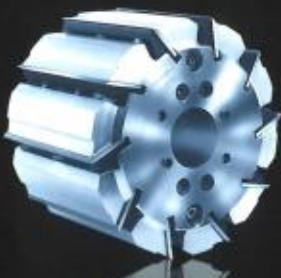


PLANING/CUTTING HEADS

SMOOTH PLANING WITH
A MINIMUM OF CUTTING MARKS
IS THE BASIC OPERATION FOR
EVERY PLANING SHOP

Whether the process involves hand feeding or high-speed cutting, the OERTLI product range offers a solution suited to any possible production situation.

The interaction between the end user and the OERTLI advisors guarantees that our products are optimally attuned to the market demand.



HYDRO PLANING CUTTERHEAD:

High-speed head that provides extremely high precision. For machining of solid wood parts. For speeds from 25 m/min to 600 m/min.



SINUS:

Universal planing system featuring extremely rapid switching of reversible knives without screws or alignment. Can be easily equipped with adjustable rounding, chamfer or groove knives. For the most common planing operations on hard and soft wood.



CASTOR:

Multifunctional planing system with exchangeable knives. Good chip ejection, fine wood removal and noise-free. Applications include planing, copying, surfacing, etc.

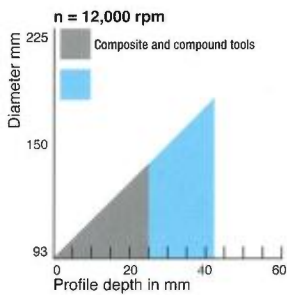
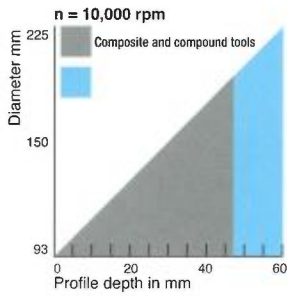
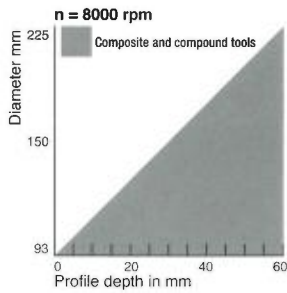


SIDEWINDER:

High-performance planer with special knives. Noise-free, low machine power requirements, forced chip ejection. Can be used for cross-grained and/or knotty wood.

POWERLOCK

PowerLock is the newest generation of tools with the accuracy and powerful 'tool fixing system' (HSK). Perfect for use on planer moulder machines from the Weinig 'Powermat' series. Speeds up to 12,000 rpm allow a doubling of feed speeds with identical surface quality.

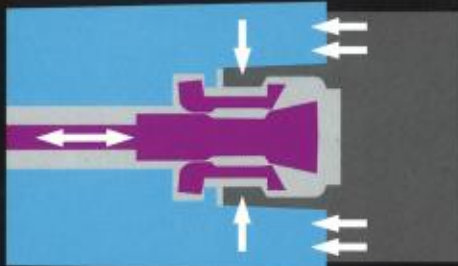


Other advantages:

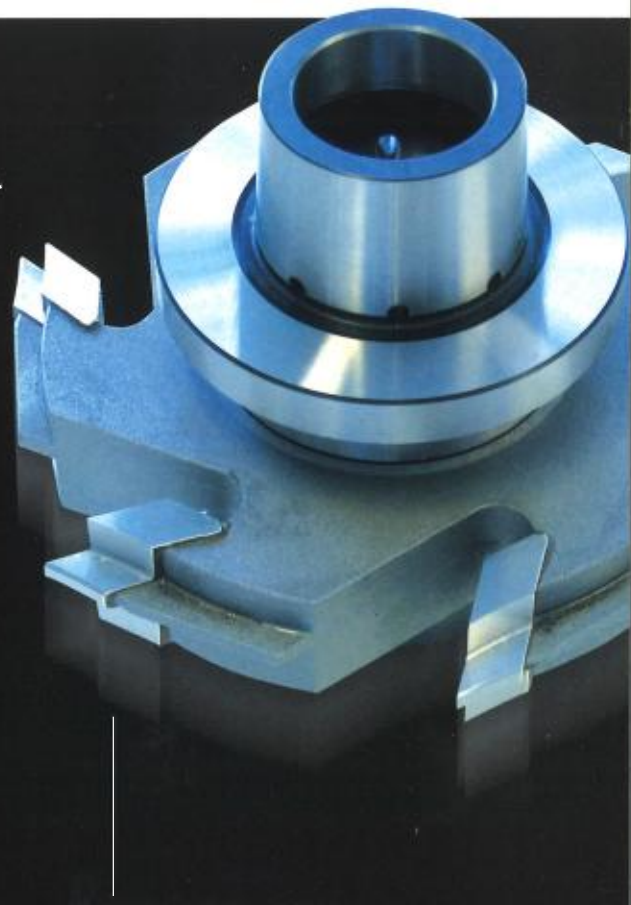
- tool and spindle can often be monolithically constructed, which results in less resonance and unbalance;
- the compact, easy-to-use tools allow quick changeovers;
- smaller diameters and the associated lower tool weights make PowerLock more user-friendly than any other tool system.

ConeXX:

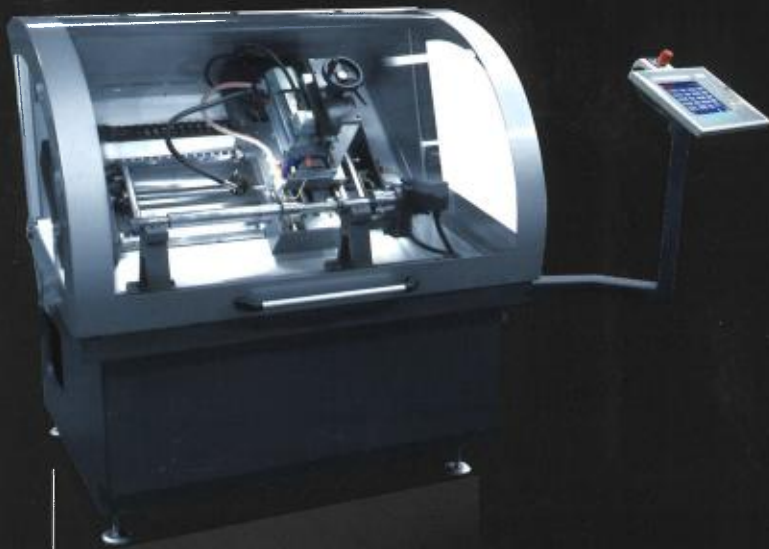
The multifunctional HSK-P work-holding system for PowerLock. Makes high-precision machining possible without the hydro-system. An outstanding alternative for the existing toothed-blade system.



PowerLock work-holding system



POWERLOCK



KOSMOS-400

High-precision grinding machine for planing heads.



SCHNEEBERGER ARIES-ENP-2:

High-precision grinder for various wood-machining tools.

SCHNEEBERGER

TECHNOLOGY FOR TOOLING

SHARPENING MACHINES

A MODERN WOOD MACHINING COMPANY CANNOT OPERATE WITHOUT FLAWLESS TOOLS

The advanced OERTLI sharpening machines make your tools sharper than sharp. Thorough tool cleaning is the basis for good sharpening. Here, too, we have the perfect solution.



Cleaning machine

The Schneeberger ARIES-ENP-2 is primarily suited for deep sharpening of your cutting tools. This machine is capable of both numerically- and tracer-controlled sharpening. You can achieve perfect cylindrical sharpening of planing cutterheads with the KOSMOS-400. This guarantees the highest achievable cylindrical accuracies within the mu range.

OERTLI-BENELUX

At OERTLI we have a passion for machining technology. Since its founding in 1963, OERTLI BENELUX has provided the best solutions for solid-wood machining within the tooling industry. Thus it is with good reason that our products are so popular in the planing world and wood-machining industry. OERTLI BENELUX manufactures all the planing tools for the entire OERTLI group and exports worldwide. OERTLI BENELUX, located in the Netherlands, is a subsidiary of OERTLI Werkzeuge AG of Switzerland. In our development and work preparation departments we produce state-of-the-art cutting tools. In our sharpening service centre we ensure that your cutting tools remain in top condition.

We rise to the challenge of keeping a finger on the market pulse and constantly strive to provide the best performance with our innovative solutions.

The result is clear!



Elftweg 4, 4941 VP Raamsdonksveer,

www.oertli.nl, oertli@oertli.nl

Sales Netherlands, Tel. +31 (0)162 - 51 48 80

Sales Belgium / Luxembourg, Tel. +32 (0)78-15 00 40

Sharpening centre Benelux, Tel. +31 (0)162-52 31 61



OERTLI INTERNATIONAL

OERTLI SWITZERLAND

OERTLI HUNGARY

OERTLI BENELUX

OERTLI SCANDINAVIA

OERTLI AUSTRIA

OERTLI RUSSIA

OERTLI GERMANY

OERTLI FRANCE

OERTLI USA

OERTLI sales offices in:

OERTLI UK & IRELAND

Denmark, Norway, Finland,
Baltic States, Czech Republic,
Slovakia, Slovenia, Spain,
Poland, Canada and many
other countries.

OERTLI ITALY

OERTLI 

Excellence in solid wood